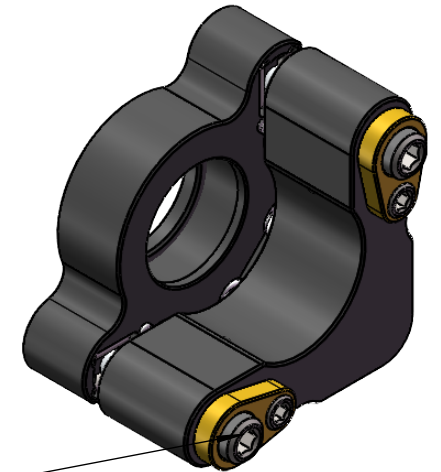


2-M4X0.25 adjustment screw,  
providing  $\pm 3.5^\circ$ ,  $0.78^\circ$  per turn,  
lever locking,  
2.0mm [5/64 inch] hexagon wrench hole.



DRAWING PROJECTION			EMHS12.7-2B		<b>Zolix</b>			
	NAME	DATE	Standard optical adjustment mount		MATERIAL	WEIGHT	SCALE	REV
DRAWN	NIC	10th/June/2025			FOLLOW THE PARTS	0.02	2:1.2	V1
APPROVAL	DICK	10th/June/2025			shop.zolix.com.cn			
THE DRAWINGS ARE ONLY FOR TYPE SELECTION INFORMATION								